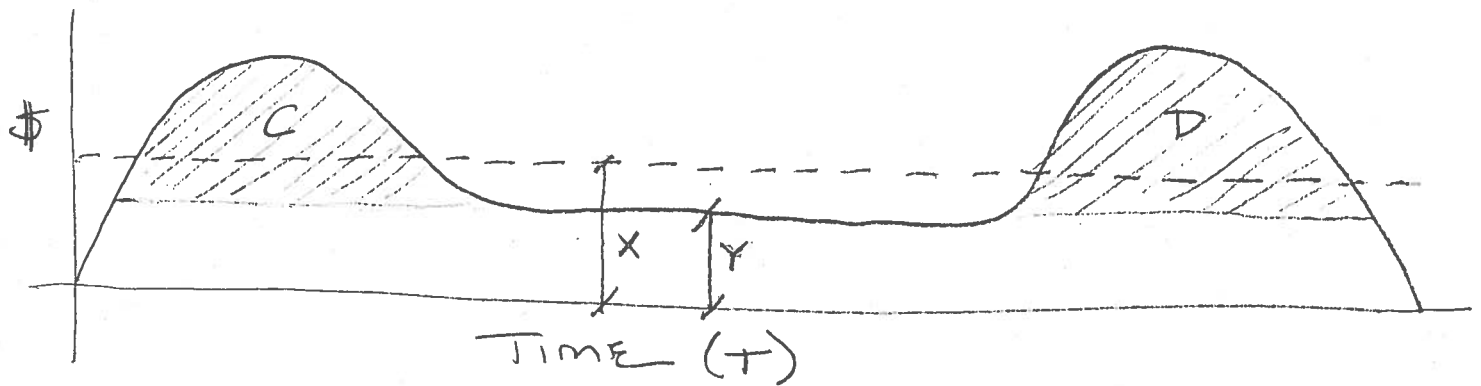


# CALCULATION OF EXTENDED GENERAL CONDITIONS



C = START-UP/MOBILIZATION

D = CLOSEOUT/DEMobilIZATION

TOTAL GENERAL CONDITIONS COST \$ A

PROJECT DURATION B DAYS

$$X = \frac{A}{B}$$

$$Y = A - (C + D) / B$$